



\* Technical data and characteristics subject to modifications without notice

### Pumping unit technical data

		PA709F8
Max. theoretical output	m <sup>3</sup> /h	70
Max. pressure on concrete	bar	85
Conc. cylinders (diam. x stroke)	mm	200 x 1500
Concrete hopper capacity	l	550

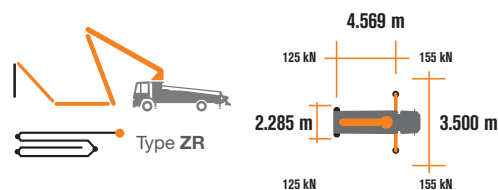
Total weight less than 18 tons, payload to the user always available.

Super compact machine mounted on 4x2 4100\* wheelbase trucks for excellent maneuverability.

Contained stabilisation dimensions for easy placement in all types of job sites.

### Control System with pumping unit PA709F8

Integrated color LCD	Diagnostics
Counters	Capsense rear panel
Pumping unit management	



### Placing boom technical data

		B4ZR 20/16
Pipeline diameter	mm	125
Max. vertical reach	m	19.75
Max. horizontal distance	m	16,1
Min. unfolding height	m	3.95
Sections number		4
1st section opening angle		90°+8°
2nd section opening angle		180°
3rd section opening angle		253°
4th section opening angle		253°
Rotating angle		+/-270°
End hose lenght	m	3

#### Optional



Lsc Safe boom operation is guaranteed when two, three or four outriggers are fully opened.



MBE  
Maximum boom  
extension control



Automatic  
RPM  
Management



# STEELTECH Series K20L

## Standard Equipment

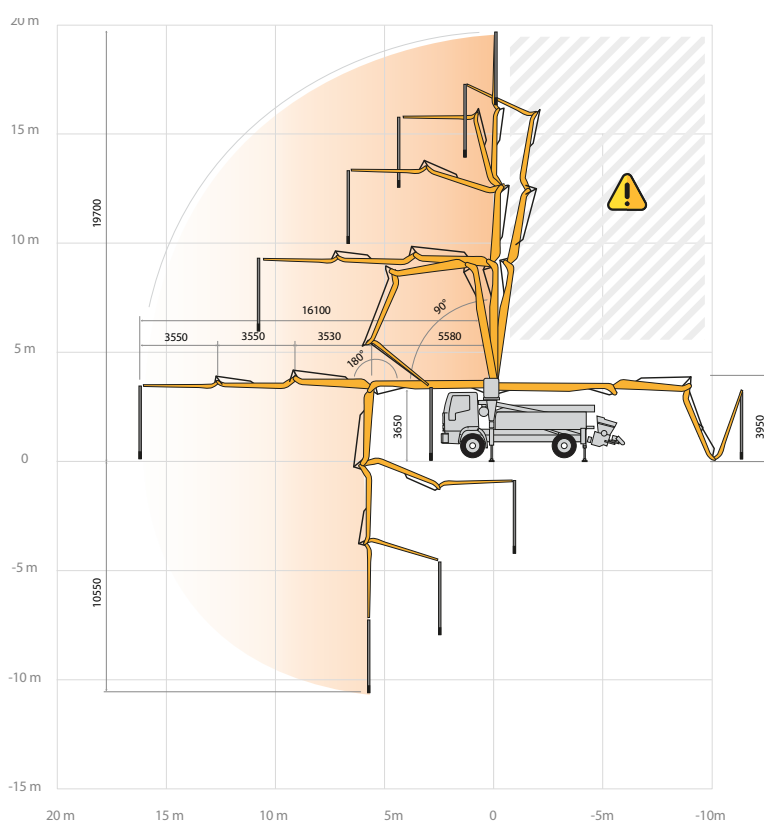
- Front "X" style outriggers for a quick set-up and easy pump placement in narrow areas
- Driven by PTO or gear box
- Boom control by means of "Load Sensing" proportional distributor
- Safety device upon opening of concrete discharge door and hopper grille
- Emergency device for pumping group
- 2 Hetronic proportional radio controls with 3 manipulators
- Emergency radio control cable 20 m
- Plastic water tank with 600-litre capacity
- Medium pressure water pump (50 l/min - 50 bar)
- LED lights for stabilisation and hopper lighting
- Double layer piping with chromium carbide inserts on the entire piping line
- Washing accessories
- High resistance of the components most subject to wear ("S" valve, wear plate, compensating ring)
- Declaration of conformity supplied with the user and maintenance manual

## Main Options

- Easytronic Gold (Easytronic Silver + LSC Light Stability Control)
- Automatic boom opening and closing
- Centralized boom lubrication system
- Concrete shut-off valve
- High pressure water pump (150 bar - 15 l/min)
- Radio remote control: Hetronic or HBC equipped with display
- Straight concrete piping on double layer boom with high wear-resistance chromium carbide inserts CIFA LLT Long Life Top
- Wide choice of customer personalization colours

**\*Over 100 options available; details available on truck pumps optional booklet**

## Distribution boom B4ZR 20/16



Product Video

